

Technical drawing of a bridge structure, showing three sections: 01, 02, and 03. The drawing includes dimensions and labels for various components.

Section 01 (Central Span):

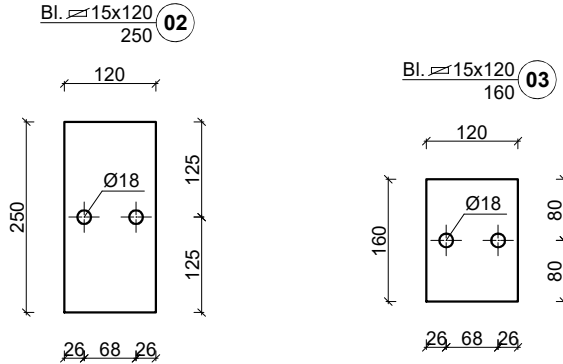
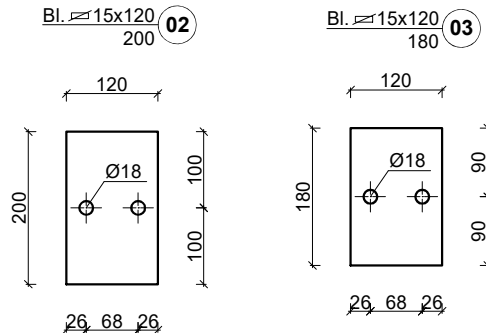
- Length: 3814
- Support: HEB120, L=4064
- Dimensions: 4064, 4108

Section 02 (Left Abutment):

- Length: 160
- Dimensions: 200, 250, 15x120, 5x120, 5x44, 5x163, 5x120

Section 03 (Right Abutment):

- Length: 160
- Dimensions: 90, 150, 15x120, 5x120, 5x44, 5x123, 5x120

[illegible][illegible]

Technical drawing of a bridge structure, likely a girder bridge, showing dimensions and components. The drawing includes a side elevation and a plan view.

Side Elevation:

- Overall length: 104
- Height of the main span: 159
- Height of the end span: 139
- Height of the main span: 180
- Height of the end span: 200
- Height of the main span: 15x120
- Height of the end span: 15x120
- Height of the main span: 5x120
- Height of the end span: 5x120
- Height of the main span: 5x44
- Height of the end span: 5x44
- Height of the main span: 5x130
- Height of the end span: 5x150
- Height of the main span: 5x120
- Height of the end span: 5x120

Plan View:

- Overall length: 4750
- Length of the main span: 4993
- Length of the end span: 5025

Components:

- HEB120 L=4993 (Main span)
- HEB120 L=5025 (End span)
- 5x120 (Main span)
- 5x120 (End span)
- 5x44 (Main span)
- 5x44 (End span)
- 5x130 (Main span)
- 5x150 (End span)

PROGECAD NR SERYJNY: AXQPK8QDNZ